

AEROSTAR INTERNATIONAL, INC.
SERVICE BULLETIN 134

November 14, 1994

SUBJECT: Interface pin breakage on Classic VIII (RB5), Classic IX (RB6) and Classic X (RB8) baskets.

PROBLEM: The aluminum interface pins used in the Classic VIII, Classic IX and Classic X baskets may be susceptible to failure under certain circumstances. Severe impact and dynamic overloading of the frame may cause breaking of the interface pin.

DISCUSSION: On several occasions we have had reported severe bending and/or breaking of the interface pins in Classic IX and Classic X baskets when flown at gross lift conditions in wind or restraint circumstances creating abnormal stresses or torquing of the superstructures. Laboratory testing of the failed parts indicated that the aluminum interface pin when subjected to this type of stress or impact may fail.

APPLICABILITY: This Service Bulletin applies to the following baskets:

Classic VIII (RB5) P/N 52805
Serial Numbers RB5-101 through RB5-103
Classic IX (RB6) P/N 52428
Serial Number RB6-101 through RB6-107
Classic X (RB8) P/N 52430
Serial Number RB8-101 through RB8-113

CORRECTIVE ACTION: The corrective action may be performed only by authorized personnel at an approved repair facility and in accordance with these installation procedures. An appropriate logbook entry shall be made returning the aircraft to service following satisfactory completion of the work.

COMPLIANCE SCHEDULE: Compliance will be required for all of the applicable baskets within the next 10 hours of flight time or prior to the next annual inspection, whichever should occur first.

<u>PARTS REQUIRED:</u>	QUANTITY	PART NUMBER	DESCRIPTION
	2	53034-01	RB Oversleeve Left
	2	53034-02	RB Oversleeve Right
	4	51011-29	1/4" SS Wire Lock Pin
	4	51518-06	Interface Pin, undrilled
	4	51013-28	Bolt AN4-16A
	4	51013-01	Bolt AN3-12A
	4	51015-10	Locknut, 1/4-28
	4	51015-01	Locknut, 10-32
	As needed	51007-04	Rattan (length as required to repair existing)

TOOLS REQUIRED:

Wrenches, 3/8" and 7/16" hex
Drill, .265 diameter
Pliers
Sidecutters
Screwdriver
Hammer
Tri-Flow lubricant (or equivalent)

PROCEDURE:

1. Remove the aluminum interface pin from the lower frame by removing the two lower bolts and nuts holding it in place. Note that some cutting of the wicker will be necessary to access the nut and bolt head. Do not re-use these nuts and bolts.
2. Install a new connector pin (P/N 51518-06) in the lower frame using one new bolt and nut (P/N 51013-01 and 51015-01) at the bottom hole only.
3. Drill out the existing upper hole in the lower frame tube and connector pin to .265" diameter, taking care to maintain the existing hole alignment.
4. Trim back the opening in the leather rail cover to outside diameter of the oversleeve (approximately 1/16" larger all around).
5. Dampen and/or lubricate the wicker woven around the lower frame tube from the bottom bolt to the handrail.
6. Drive the oversleeve (P/N 53034) with the chisel-end first through the handrail opening and the wicker woven over the lower frame tube. Use a rubber hammer or a wooden block to avoid damaging the top edge of the oversleeve. Note that there is an orientation to the sleeves (-01 and -02) so that the top hole will line up properly with the hole in the upper support tube.
7. It will be necessary to cut some of the wicker woven around the lower tube depending on the age of the basket and how tightly it was woven. Spray lubricant is helpful and it is best to go slow driving the oversleeve while spreading the wicker with a screwdriver. A little patience will reduce the amount of re-weaving required.
8. Align the bottom hole of the oversleeve at the top hole of the lower frame, and bolt the sleeve in place using the new aircraft bolt and locknut provided (P/N 51013-28 and 51015-10).
9. Place the superstructure support tube in position in the oversleeve, and using the sleeve as a guide, drill out the support tube and connector pin to .265" diameter, taking care to maintain the existing hole alignment. (Note the bottom hole in the support tube is no longer used). Check the 1/4" wire lock pin (51011-29) for a smooth fit in the hole, and redrill and/or deburr as needed.

10. Attach the quick release pin lanyard to the nearby wicker using the micropress sleeve provided (P/N 51037-07).
11. Repair, replace, re-weave wickerwork as required.
12. Repeat procedure at remaining corners.
13. An appropriate logbook entry shall be made returning the aircraft to service following satisfactory completion of the work.

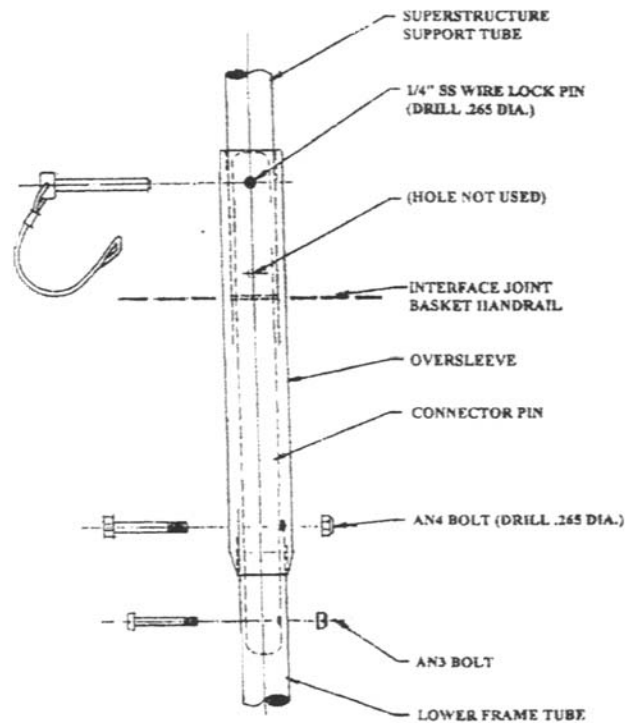


Figure 1 - RB Oversleeve installation

CONTACT:

If you would have an questions regarding this Service Bulletin, please contact:

Dee M. Rose
Customer Service Manager
AEROSTAR INTERNATIONAL, INC.
P.O. BOX 5057
SIOUX FALLS, SOUTH DAKOTA 57117
PHONE: 605-331-3500
FAX: 605-331-2547